

Encino Hills Neighborhood

Cut-through Mitigation & Traffic Calming

Summer 2025 Presentation

**NITHYA
RAMAN**

Los Angeles
City Councilmember
4th District

LADOT

Presentation Outline

Issue History and Local Context

Location Map

Goals of Engagement and Implementation

Process

Examples of Tools

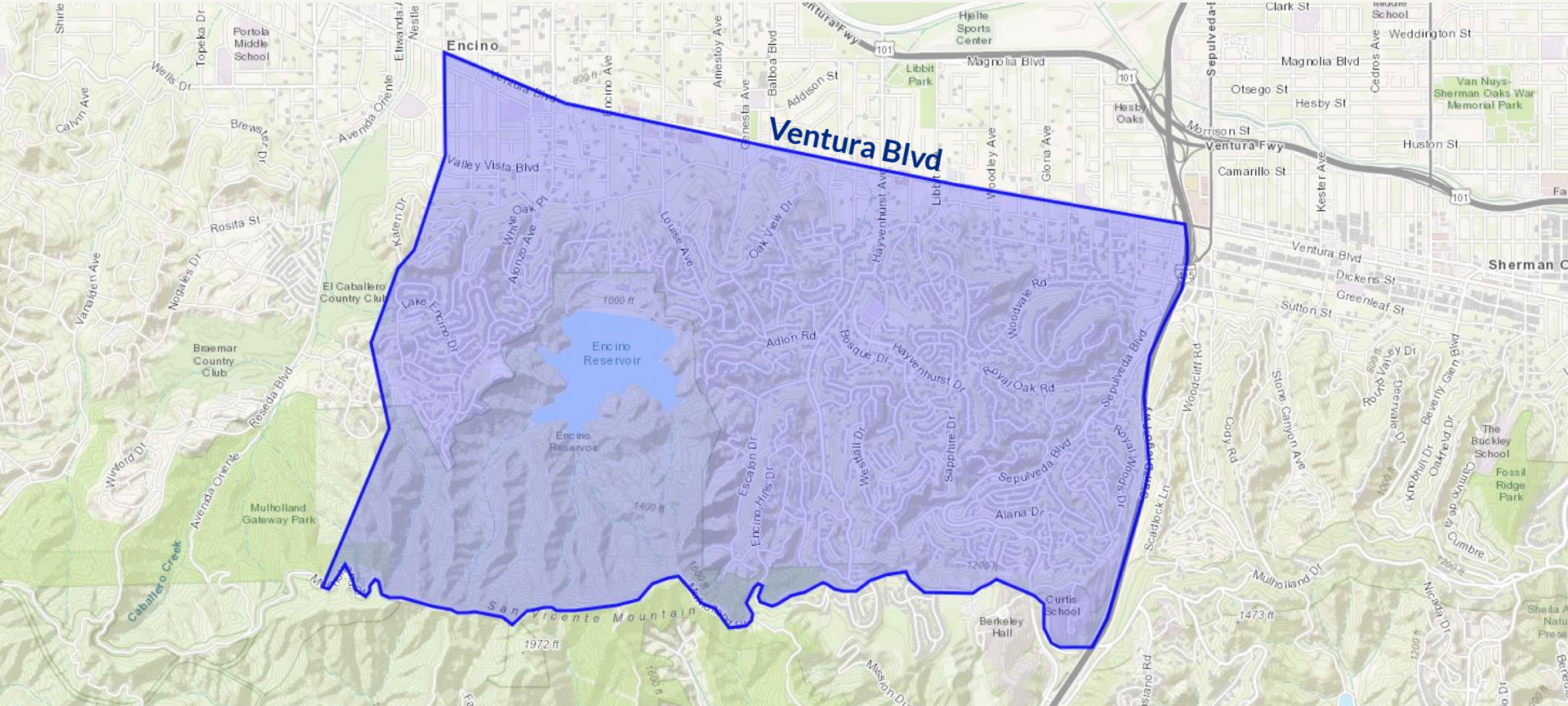
Outreach To-date

Survey Responses

Issue History and Local Context

- Cut-through traffic on local streets from commuters going to the Sepulveda Pass via neighborhood streets to the *Hayvenhurst* → *Calneva* → *Mulholland* routes or to *Sepulveda Boulevard* route
- Persistent traffic volume, speeding, and unsafe driving concerns from residents
- Availability of funds dedicated to this area, and LADOT has a toolbox for quick-build features
- Community groups with deep and wide roots which can help engagement efforts

Location Map



Goals of Engagement and Implementation

1. Utilize outreach to gauge the community temperature on certain implementation strategies as well as highlight locations, and issues, of concern
2. Reduce cut-through traffic volume to Hayvenhurst / Calneva, and to Sepulveda Blvd
3. Implement speed mitigation and traffic calming at important locations, utilizing current LADOT toolbox
4. Utilize a “tactical trial” model for turn restrictions and mitigation features
5. Utilize local community groups’ distribution networks to facilitate information-sharing

Process - Phase 1 (Study and Review)

Survey: (October 2023 – Q1 2024)

- Online survey element
- Proactive engagement done as necessary
- Updates at ENC and EPOA

Review: (Q1 2024 – Q1 2025)

- CD4 sorted response data and created a Response and a related Comment table
- LADOT reviewed survey responses and traffic data gathered during 2024 and will propose a suite of volume reduction and speed mitigation measures
 - **Now: LADOT is proposing the Volume Reduction measures (peak hour turn restrictions)**

Process - Phase 2 (Tactical Trial Period)

Tactical Trial Period (2025)

- LADOT will implement the turn restriction locations on a “tactical trial” basis
- Turn restrictions will come first, followed by speed mitigations / traffic calming locations (Phase 3)
- A new survey element / outreach during tactical trial period for turn restrictions
- Updates at ENC and EPOA

Evaluation

- LADOT will evaluate turn restriction locations after at least six months after implementation and share evaluation results
- Adjustments/modifications, additions or removals of locations based on data

Process - Phase 3 (Speed Mitigation/Traffic Calming)

Speed Mitigation/Traffic Calming

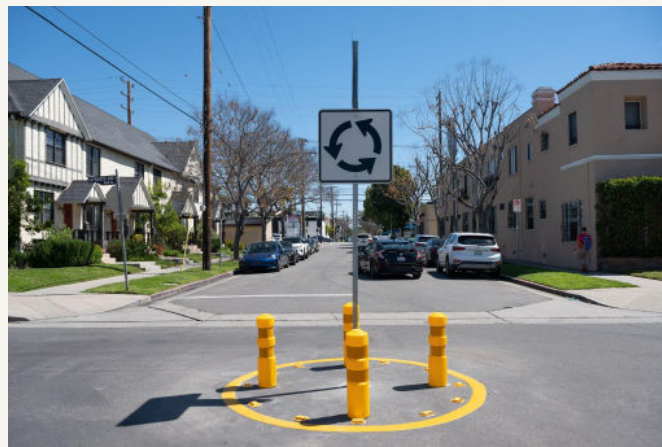
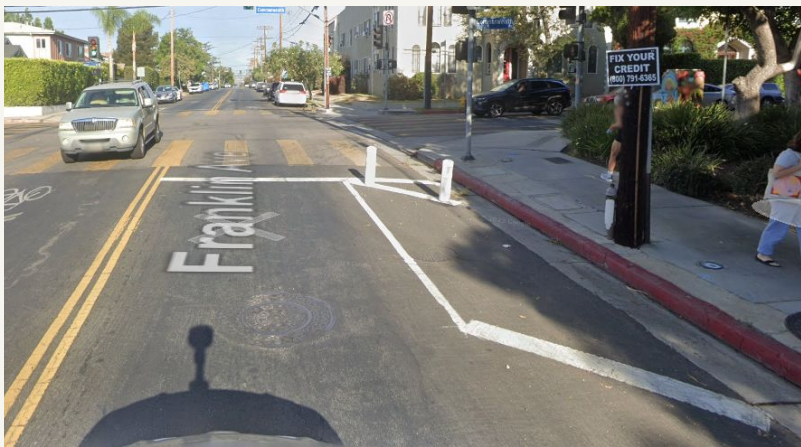
- Speed mitigations / traffic calming locations will be proposed based on Phase 1 Survey, as well as data gathered
- Updates at ENC and EPOA
- Installations will be placed
- Closeout of project

Examples of Tools – Turn Restrictions



- “Front Door”
 - Meter traffic onto Hayvenhurst at Ventura (via NRTOR, signal timing)
 - Restrict turns from Ventura Blvd onto streets that lead to Hayvenhurst
- “Back Door”
 - Restrict turns from local roads onto Hayvenhurst south of Ventura Blvd

Examples of Tools – Traffic Calming



Painted Median



Examples of Tools – Traffic Calming (Cont.)

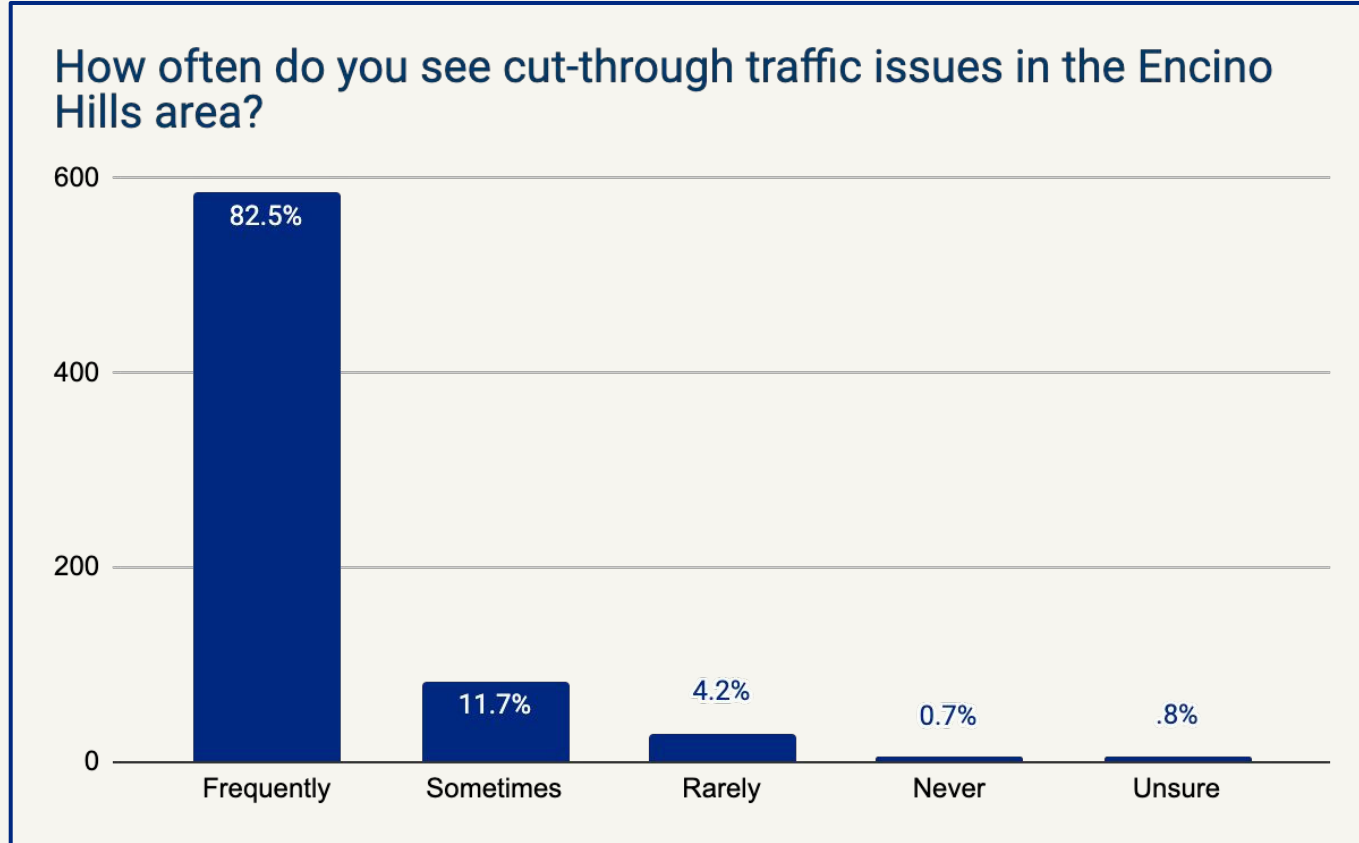


Outreach To-date

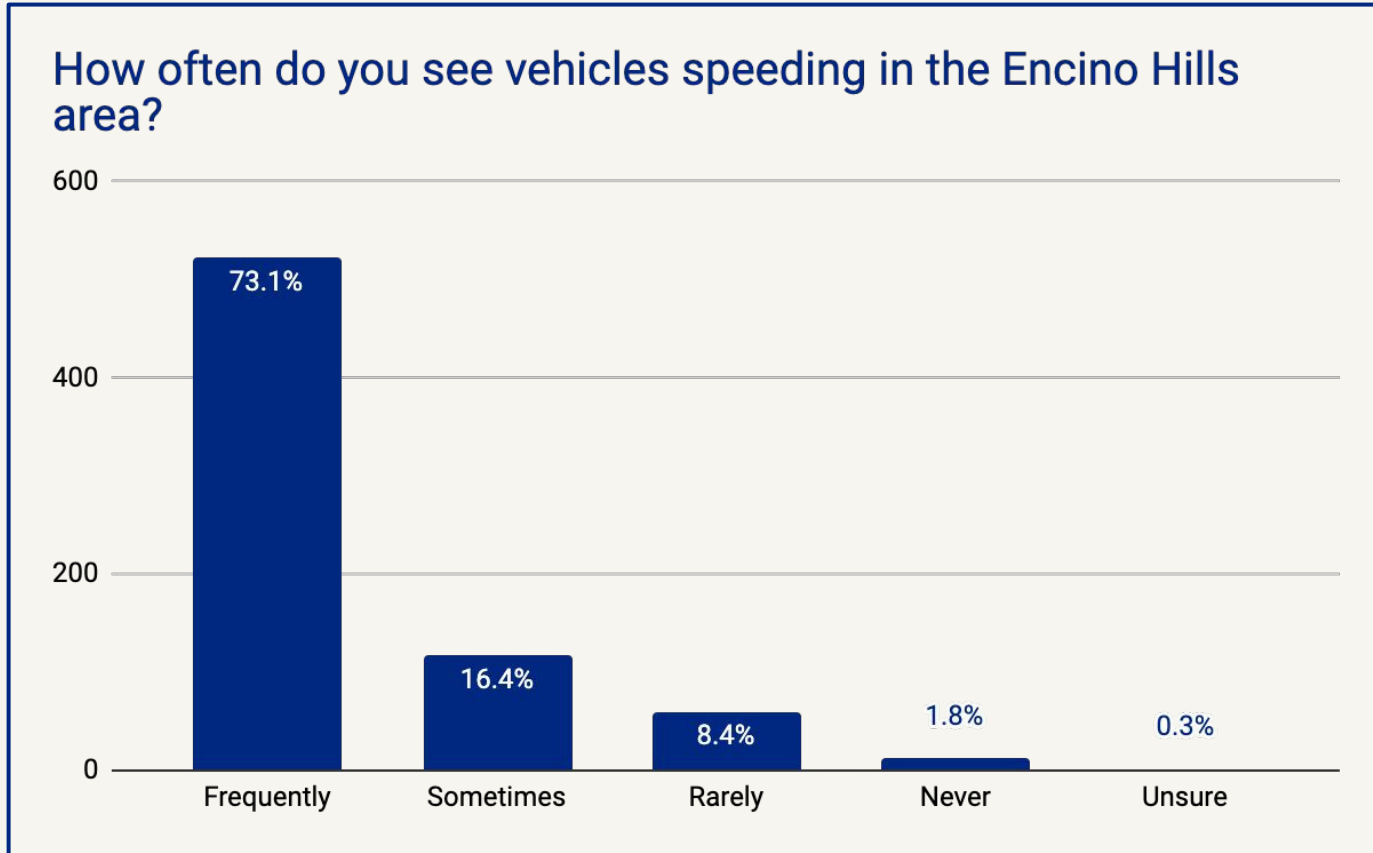
- Announcement of survey to EPOA (9/23/2023) and ENC Trans. Cmte (11/1/2023)
- Digital survey was run from 11/1/2023 to 3/1/2024
- Door-knocking in the Encino Hills 12/6/2023 and 1/5/2024
- Presentation to Lanai Rd Elementary Principal and parents on 1/17/2024
- Text banking to notify residents of survey on 1/24/2024 in Encino Zip codes
- Presentation to ENC Transportation Committee on 2/8/2024
- Presentation to ENC Full Board on 2/28/2024
- Presentation to ENC Transportation Committee on 5/16/2024
- Presentation to EPOA on 2/12/2025
- Presentation to ENC Transportation Committee on 5/29/2025

Phase 1 Survey Responses: Traffic Issues

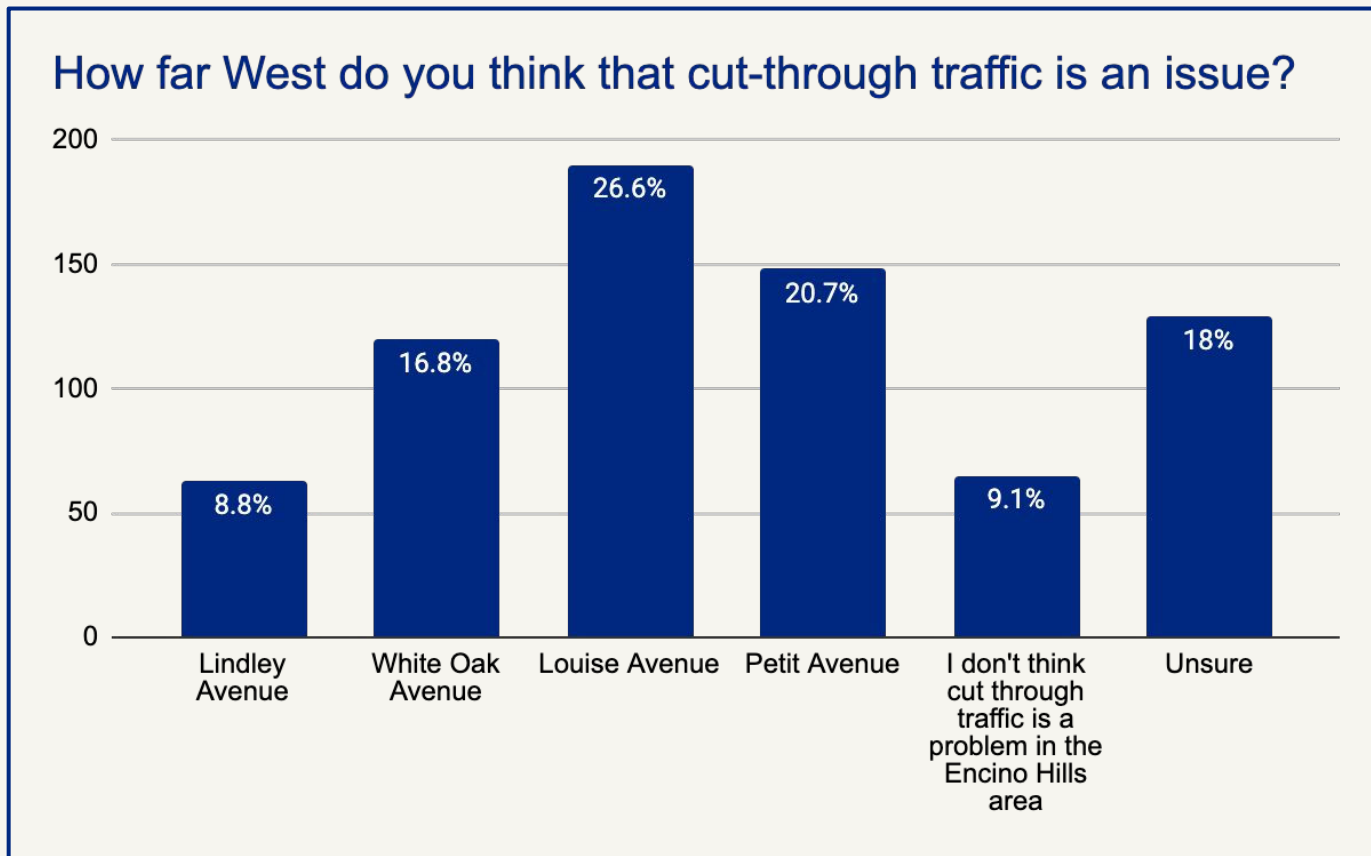
Traffic Issues - Cut-through Traffic



Traffic Issues - Speeding

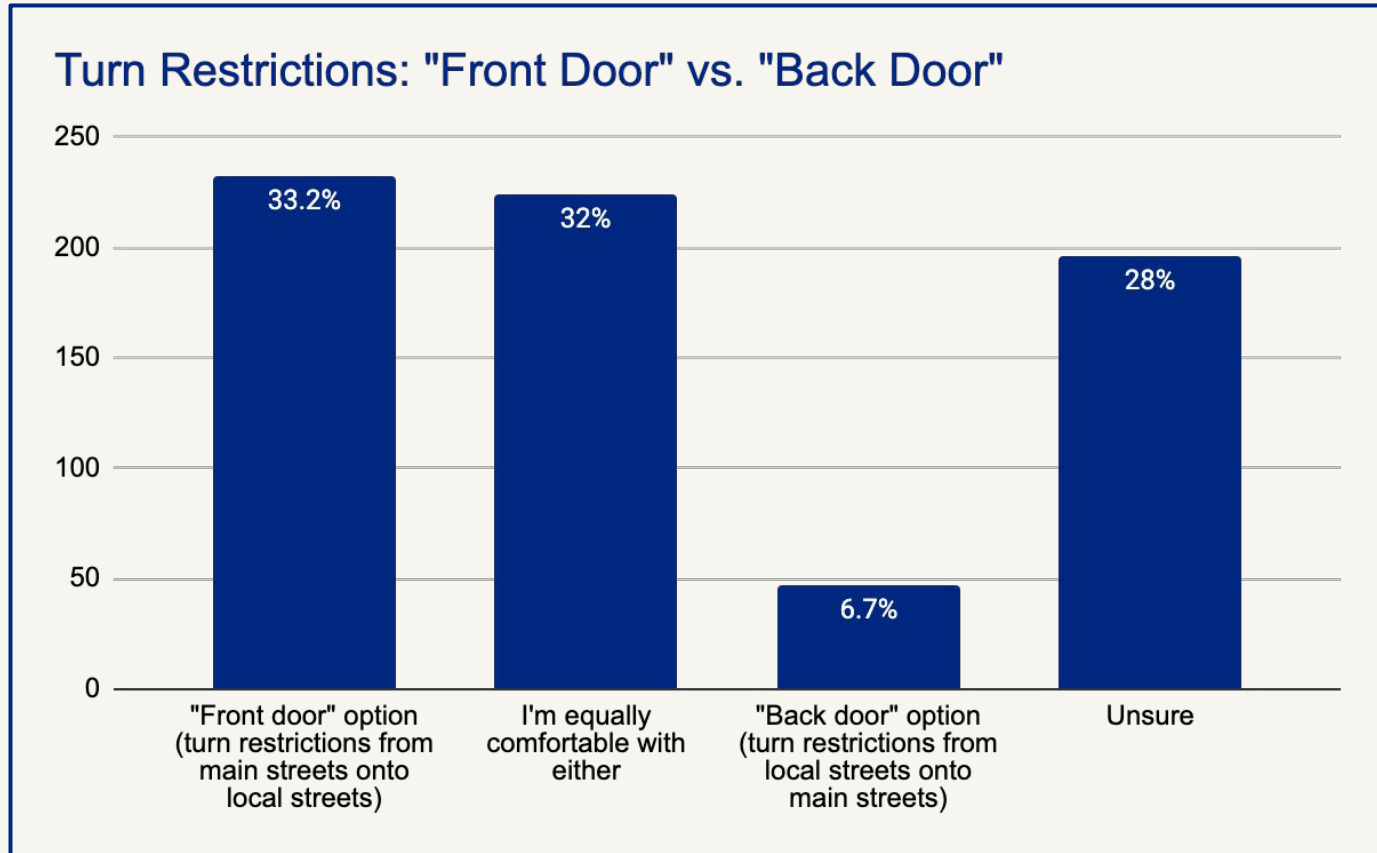


Traffic Issues - Cut-through Traffic Initiation

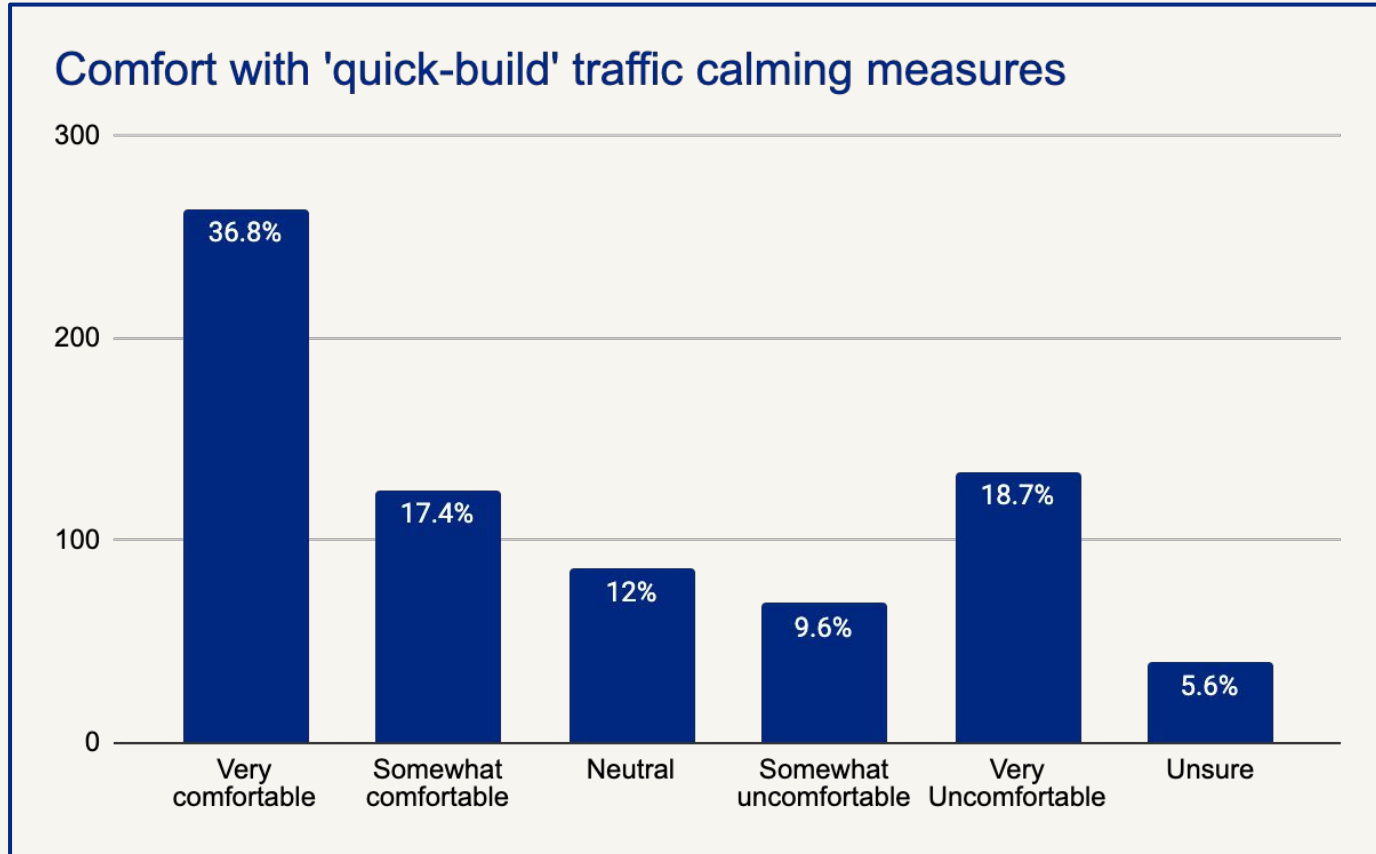


Phase 1 Survey Responses: Comfort with Potential Solutions

Potential Solutions - Turn Restrictions Cont.



Potential Solutions - 'Quick-Build' Measures



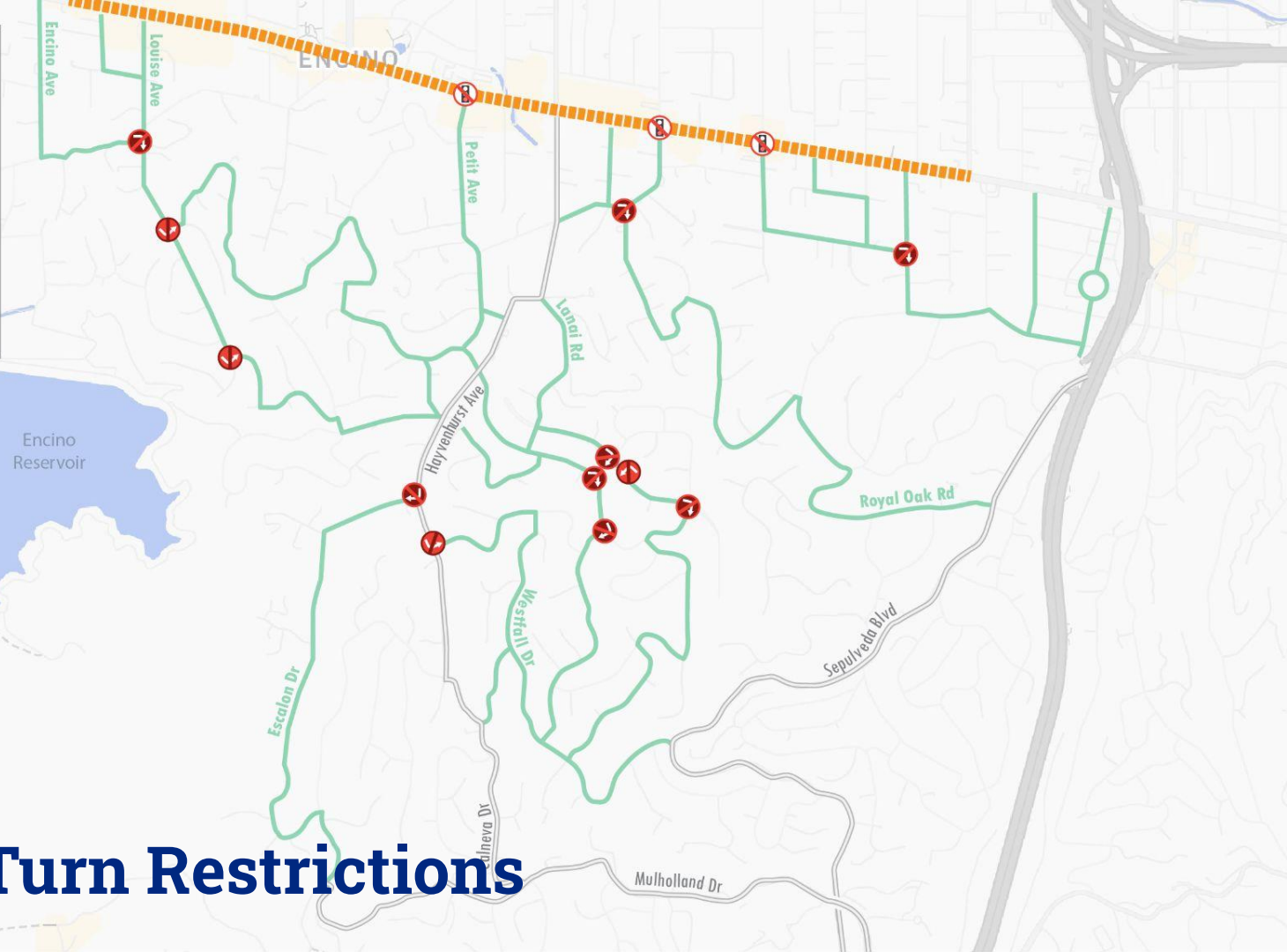
Vehicle Traffic Count Locations

- Ballina Canyon Dr & Westfall Dr – 4/3/2024
- Libbit Ave & Hayvenhurst Ave – 4/3/2024
- Adlon Rd & Hayvenhurst Ave – 4/3/2024
- Louise Ave & Ventura Bl – 4/3/2024
- Royal Hills Dr & Sepulveda Bl – 4/3/2024
- Hayvenhurst Ave & Calneva Dr – 4/3/2024

Although counts were conducted when some schools were not in session, traffic counts still revealed a high volume of traffic.

- Warning Signage
- No Left Turn (7-10am)
- No Right Turn (7-10am)
- No Right Turn on Red (24/7)
- Cut-through Route*
- Arterial or Collector

*Route identified as a cut-through with a high preponderance in the Encino Hills Neighborhood Cut-through Mitigation and Traffic Calming Survey



Proposed Turn Restrictions

Phases 2 and 3 Next Steps Timeline

- Manufacturing Signs – 2-3 months, potentially shorter or longer
- Installation of Signs – 2-3 months, potentially shorter
- Tactical Trial / Survey / Evaluation Period – 12 months
- (Phase 3) Quick-Build Traffic Calming and Speed Hump Locations proposal to begin during the evaluation period to inform the proposal
- (Phase 3) Quick-Build Traffic Calming and Speed Hump Implementation would follow

Thank you!

Please visit cd4.lacity.gov/encino-hills-traffic for more information